

MASTER DRAWINGS



1

MARGOT GORDON and CRISPIAN RILEY-SMITH
at

SHEPHERD
W & K
GALLERIES



2



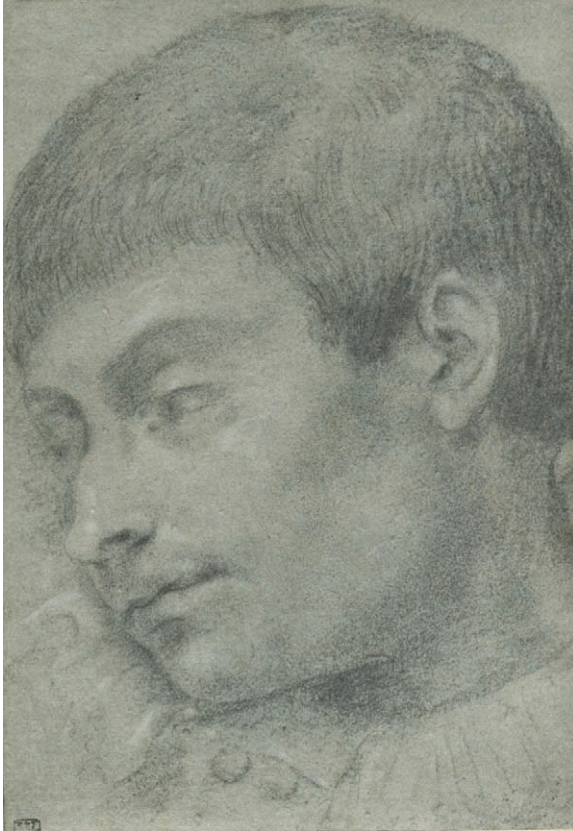
3



4



5



6

- (1) CORNELIA MARIS HAAKMAN (1787-1834). *Tulips, Carnations, Blue Bells in a Vase with a Still-life of Butterfly and Snail*, 338 x 278 mm (13 1/4 x 11 in.)
- (2) PIETRO DA CORTONA (1596-1669). *Study for a Figure in the Sala di Apollo*, 184 x 241 mm (7 1/4 x 9 1/2 in.)
- (3) CIRCLE OF PARIS BORDONE (1500-1571). *Study of a Lady's Dress*, 230 x 168 mm (9 x 6 7/8 in.)
- (4) VERONESE SCHOOL (16th century). *Entombment of the Virgin, Accompanied by Three Angels*, 212 x 260 mm (8 3/8 x 10 1/4 in.)
- (5) PIETRO LIBERI (1614-1687). *Venus and a Satyr*, 216 x 289 mm (8 1/2 x 11 3/8 in.)
- (6) AGOSTINO CARRACCI (1557-1602). *Head of a Youth*, 292 x 210 mm (11 1/2 x 8 1/4 in.)
- (7) GIAN LORENZO BERNINI (1598-1680). *Study for a Funeral Monument*, 213 x 200 mm (8 3/8 x 7 7/8 in.)
- (8) ITALIAN SCHOOL (18th century). *Mercurius*, 47 x 85 mm (1 7/8 x 3 3/8 in.)



7



8

MASTER DRAWINGS

January 25th – February 23rd, 2013

Shepherd Gallery, with our new affiliate W & K (Wienerroither & Kohl-bacher) Vienna, hosts Margot Gordon and Crispian Riley-Smith, the organizers of Master Drawings New York. Their eighth joint exhibition features works by celebrated Renaissance and Baroque masters, including a preparatory drawing for Pietro da Cortona's murals in the Palazzo Pitti in Florence, a study for a funeral monument by Gian Lorenzo Bernini, and two of Filippo Lauri's designs for the Palazzo Borghese in Rome. Additional 16th and 17th-century works from the Sieneese, Genoese, Florentine, Bolognese, Venetian and Roman schools complement Dutch drawings and watercolors of the 17th and 18th centuries.

You are cordially invited to attend receptions for
the exhibition at SHEPHERD / W&K GALLERIES on

Friday, January 25th, 4:00 – 8:00 p.m.

and

Saturday, January 26th, 3:00 – 6:00 p.m.

Margot Gordon Fine Art
1400 Fifth Avenue
New York, NY 10026
Tel: (212) 595 4969
mgordonfinearts@aol.com

Crispian Riley-Smith Fine Arts Ltd.
Summerrill, Kirkby Malham
Skipton, North Yorkshire BD23 4BS, England
Cell: +44 (0) 7771 552 509
Tel: +44 (0) 1729 830 734
www.riley-smith.com
crispian@riley-smith.com

**SHEPHERD
W & K
GALLERIES**

58 East 79th Street
New York, NY 10075
ShepherdNY@aol.com

Tel: (212) 861 4050
Fax: (212) 772 1314
www.shepherdgallery.com